



# Supplier of Medical Equipment In-Hospital, Pre-Hospital & Homecare and Consumables

## National Sales and Training

Contact: Michele Hiscox

Cell: +27 62 344 1987

E-Mail: [michele@trinitymedical.co.za](mailto:michele@trinitymedical.co.za)

## Office Sales Support

Contact: Dee Andrews

Cell: +27 72 199 0307

E-Mail: [sales@trinitymedical.co.za](mailto:sales@trinitymedical.co.za)

## Wellness Equipment Sales and Training

Contact: Sevy Andrews

Cell: +27 72 364 3027

E-Mail: [sevy@trinitymedical.co.za](mailto:sevy@trinitymedical.co.za)

## Office Admin

Contact: Estie Coetzer

E-Mail: [admin@trinitymedical.co.za](mailto:admin@trinitymedical.co.za)

# INDEX

	<b>Page No.</b>
EKUORE	2
MONITORING EQUIPMENT	3
BLOOD PRESSURE	4
ECG CABLES	5
SPO <sup>2</sup> CABLES	6
BLOOD PRESSURE METERS	7
TEMPERATURE	8
LARYNGOSCOPE	9
POWER / KETTLE CORDS	10
PRESSURE INFUSION	10
STETHOSCOPES	11
WEIGHT SCALES	12
BODY COMPOSITION ANALYSER	13
SUCTION EQUIPMENT	15
MEDICAL GAS REGULATORS	16
RESPIRATORY EQUIPMENT	17
OXYGEN FLOW METERS	19
MEDICAL GAS	20
HYGIENE	21
UV STERILISER	22
UV MARKER	22
LASER ENGRAVING	23
SECURITY / MEDICAL SEALS	24

# WI-FI / APP BASED DIAGNOSTIC DEVICES - EKUORE



**Digital Stethoscope  
Wireless**



**Digital Veterinary ECG  
6 Lead Monitor**



**Veterinary Cardiac  
Monitor**



**Digital Veterinary  
Endoscope**



**Digital Veterinary  
Otoscope**

# MONITORING EQUIPMENT



## Tourniquet Machines & Accessories



**Diagnostic / ENT Set**



**Doppler Obstetrical /  
Vascular**



**Oxygen Monitor  
TELEDYNE MX Series**

# BLOOD PRESSURE CUFFS



**NIBP Single / Double  
Tube/Hose Cuff**



**Disposable NIBP Single /  
Double Tube/Hose Cuff**



**Aneroid – 5 Cuff Set with  
Gauge**

# BLOOD PRESSURE FITTINGS

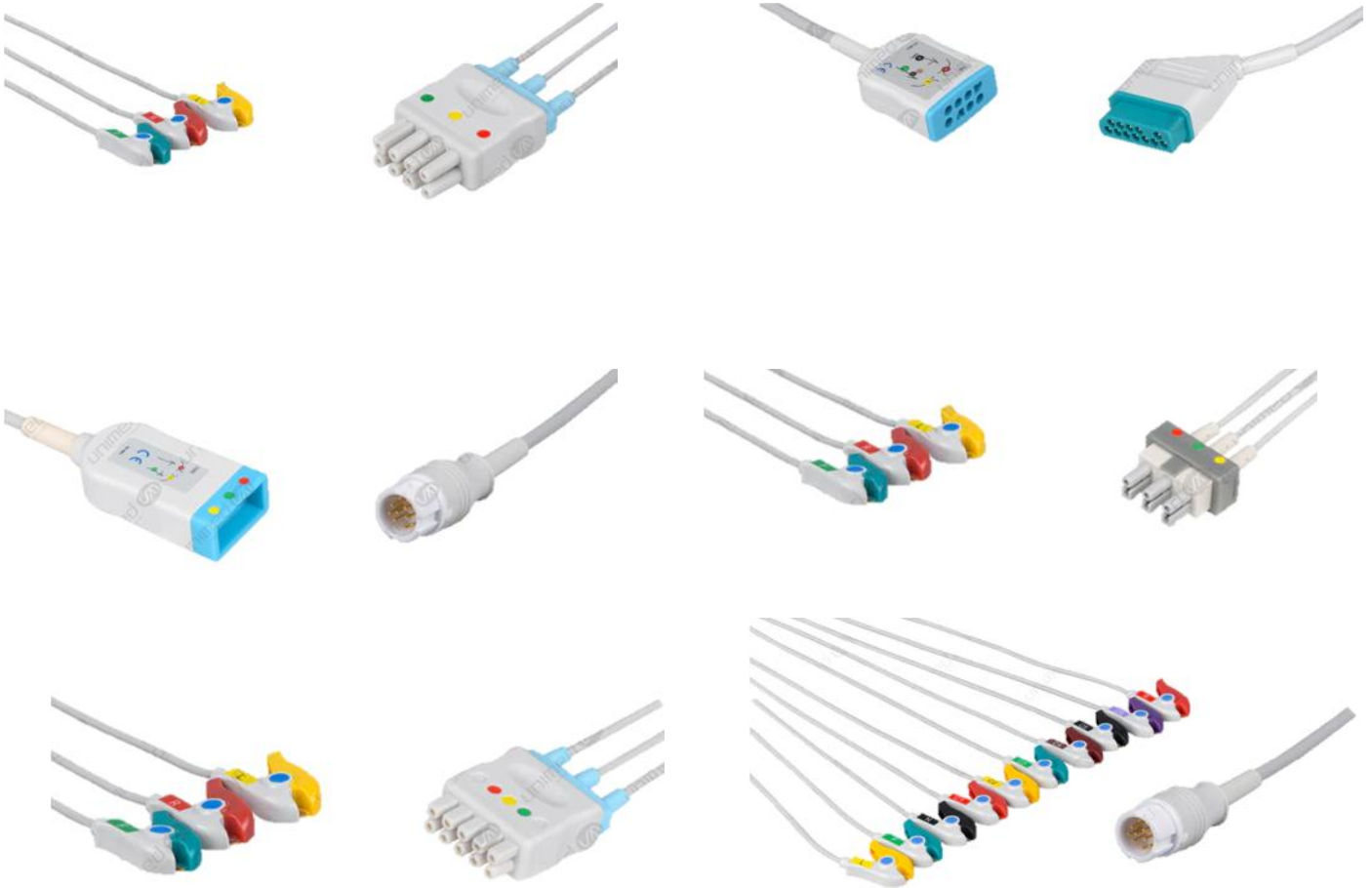


# BLOOD PRESSURE HOSES





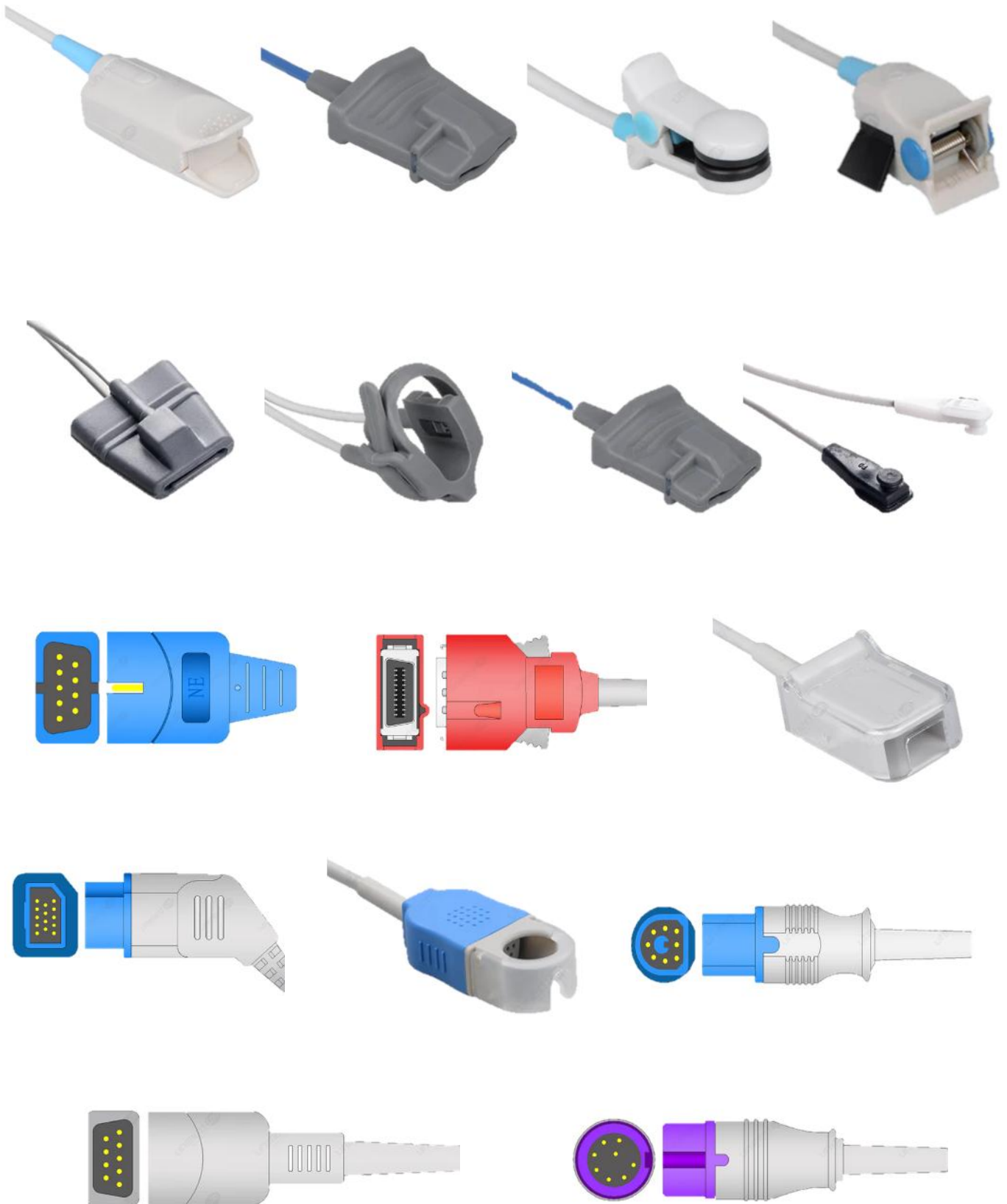
# ECG CABLES



# ECG ACCESSORIES



# SPO<sup>2</sup> CABLES



# BLOOD PRESSURE METERS



**Vital Signs Monitor**



**Aneroid – Square Face Wall Mountable / Desk**



**Bulb with Air Control Valve**



**Aneroid – Pocket with Single Head Stethoscope**



**Coiled Tubing**



**Contec – Electronic BP Monitor with SPO<sup>2</sup>**



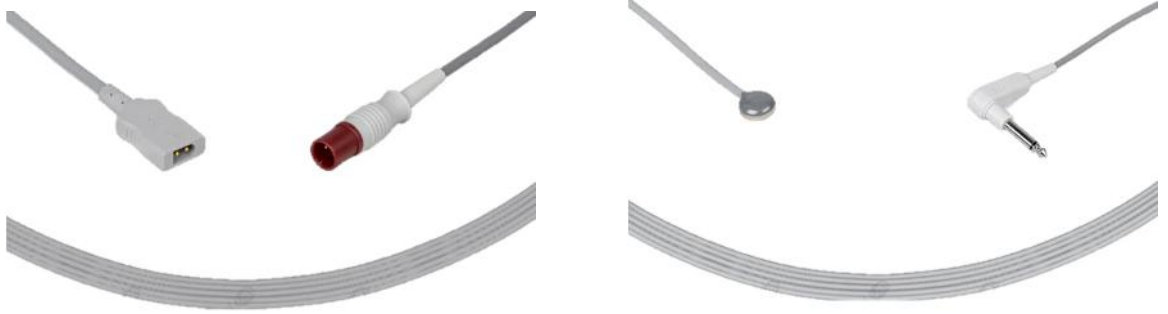
**Aneroid – Pocket**



**Rossmax – BP Monitor Automatic**



# TEMPERATURE SENSORS



# TEMPERATURE MEASUREMENT



# LARYNGOSCOPES

## Paediatric and Adult Laryngoscope Set



**Macintosh Paediatric Set**



**Miller Paediatric Set**



**4 Blade Set**



**Macintosh Conventions / Fibre Optic Blades  
Sizes 00 - 5**



**Miller Conventions / Fibre Optic Blades  
Sizes 00 - 5**



**Macintosh Integrated Blades Fibre Optic**



**Conventional / Fibre Optic Handles Size  
AA / C**

# POWER / KETTLE CORDES



## PRESSURE INFUSION

500 ml – 3000 ml



Single Patient Use



Re-Usable



Re-Usable Heavy Duty

# STETHOSCOPES



**Budget**



**Budget Dual Head**



**Rappaport Dual Head  
Double Tube**



**Cardiologist Dual Head**



**Neonatal Dual Head**



**Littman Classic III SE**



**Paediatric Littman  
Classic II SE**



**Digital Stethoscope  
Wireless**

# WEIGHT SCALES





# BODY COMPOSITION ANALYSER



**NEW!!!**

## Body Composition Analyzer

Trainers and athletes understand that fitness is much more than how you look and how much you weigh. Quantifying where the muscle is going. Seeing if the loss in weight is from burning through fat, or insufficient hydration. Tracking where progress has been made, and where to focus your efforts. The fitness community has asked for precise tools and data to keep up with increasingly advanced needs, and Charder is proud to present the MA601 Body Composition Analyzer, designed to assist professionals in elevating program quality and progress analysis.



Various models available

The MA601 provides the relevant measurement values and data that you need to bring your program to the next level. Boasting multiple measurement frequencies and sophisticated algorithms, Charder stands by our devices with clinical trials and over ten years of original peer-reviewed scientific research, for results you can trust.



## Sports Medicine

### Monitor Rehabilitation Progress

Utilize Phase Angle to track progress and recovery at a cellular level, helping you determine when it's safe to allow an injured athlete to resume training and tough workouts.

## Fluid Management

### Track changes in body fluid

Precise tracking and management of extracellular and intracellular fluid is of utmost importance in a wide variety of diseases, including but not limited to cardiac and renal deficiency. Compare ECW/ICW proportion to evaluate imbalance, and track body water changes as frequently as needed.

## Obesity Treatment

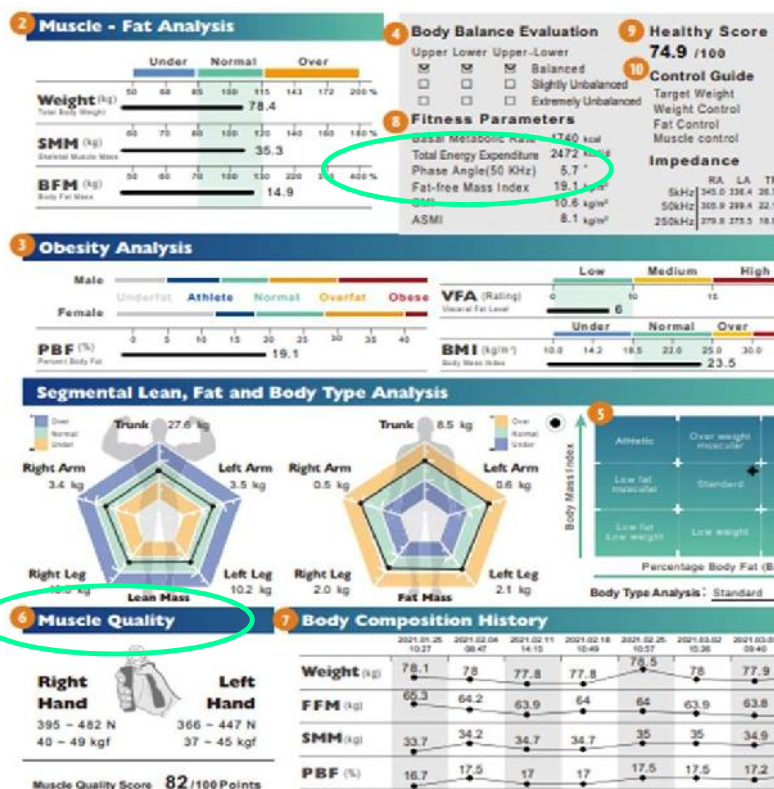
### Detect hidden obesity risk

Utilize body type analysis, which combines BMI and Percent Body Fat, providing medical professionals with an additional tool for evaluation of hidden obesity risk.

## Evaluation of Sarcopenia

### Track changes in quality, not quantity

In elderly populations, muscle strength can decline much more rapidly than muscle mass. By evaluating muscle effectiveness through evaluation of cellular health, healthcare professionals now have a more useful indicator that may provide early warning for fall risk.



U310

The Chorder U310 Body Composition Analyzer offers a full body measurement system in a portable device, increasing accessibility and convenience...



# SUCTION EQUIPMENT





# MEDICAL GAS REGULATORS

## Oxygen



## Medical Air



## Accessories



Female SA Heyer Connection with 1/8 NPT Thread



Bodok Seals for Pin Index Regulators



O Rings for Bullnose Regulators



Entonox delivery System

# RESPIRATORY EQUIPMENT



**High Flow Nasal Cannula System**





**O<sup>2</sup> Cylinders 1200 l / 450 l Pin Index / Bull Nose**



**O<sup>2</sup> Traveler 450**



**Cardio Pulmonary Resuscitators (BVM) Silicone Adult, Paediatric / Infant with / without box**

# OXYGEN FLOW METERS



O<sub>2</sub> Flow Meter with  
Heyer connection  
"Click Type"



O<sub>2</sub> Flow Meter with  
Heyer connection  
"Ball and Tube Type"



O<sub>2</sub> Flow meter  
Control Knobs



O<sub>2</sub> Flow Meter with Heyer  
connection with Gabler rail mount  
"Ball and Tube Type"



O<sub>2</sub> Flow meter  
Spare Part Kit



Tail Piece / X-Mas Tree Connector for  
O<sub>2</sub> Flow meter Swivel Type

# MEDICAL GAS



White / Black / Blue / Yellow / Green  
Anti-Static Medical Tubing / Hose



Silicone  
Tubing



Oetiker Clip Pliers  
Side Pinch



Oetiker Hose Clamps



Female Front  
Body



Female Front and  
Back Body

Heyer Wall Outlet Sockets



Wall Box



Flush Mount

Heyer Complete



Wall Box



Flush Mount

Heyer Covers



Heyer Probes for Oxygen / Nitrous  
Oxide / Medical Air / High Pressure  
Medical Air / Vacuum



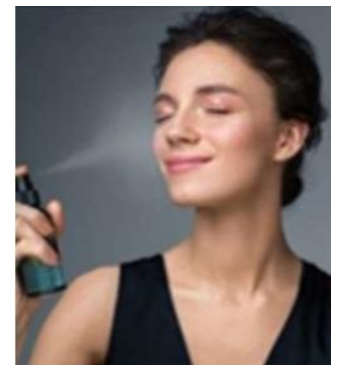
## HOCl (Hypochlorous Acid) Sanitiser and Fogger:

A patented Electro-chemical activation process, turning water into Hypochlorous Acid (HOCl). This Acid mimics the chemistry of the human body's natural defense system.

**HOCl The same acid our body generates in response to infection.**

As a result, **HOCl** is the **safest, most effective sanitiser**. Safe to use on humans, animals, food and surfaces.

It's amazing!  
It's safe!  
It's effective



CLINICALLY TESTED - SAFE TO FOG A ROOM WITH PEOPLE INSIDE, SPRAY ON FOOD, SPRAY INTO AIRWAYS, ONTO SKIN AND SANITISE SURFACES.

## THE BEST PART OF B-SAFE HOCl

**TURN TAP WATER INTO THE SAFEST MOST EFFECTIVE SANITISER!!!**

- \* Locally manufactured - priced very competitively and always in stock
- \* NON-TOXIC (safe on food, safe for humans (even babies), animals, plants)
- \* NON-CORROSIVE
- \* Fogging possible while people present
- \* Highly effective against CORONA VIRUS
- \* Safe to inhale
- \* Buy bottle and tabs, thereafter buy only tablets
- \* Transport costs are cut completely - no heavy liquids to transport
- \* Tablet shelf life is 2 years
- \* Extremely easy to use, fill the bottle with tap water, shake and use
- \* Use within 21 Days of initial mixing
- \* Certification and Registrations: FDA G.R.A.S, NRCS, SABS and ORGANIC mark
- \* Ideal for Sanitising Home, School, Office, Cars, Minibus, Fogging offices/shops, Trains and Aircrafts. NO HARMFUL RESIDUE!
- \* Also Ideal for Campers, Hikers and Outdoor sports as wound disinfectant



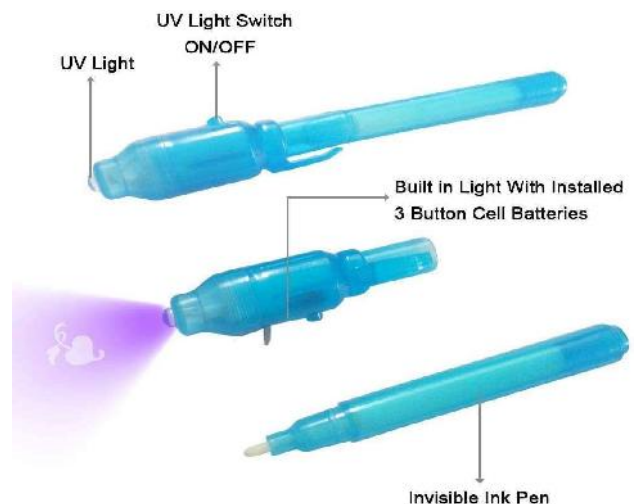
# UV STERILISER



	Steam Sterilisers	VS.	UV Sterilisers
<b>Safety of Equipment</b>	High risk of scalding because of hot water injury due to heating element malfunctioning.		No UV ray exposed as the sterilisation process is contained within isolated box.
<b>Average Cost</b>	~AUD 100-300		~ AUD 300-500
<b>Energy Consumption</b>	High electricity consumption.		UVC LED Bulbs have high energy efficiency.
<b>Maintenance</b>	Frequent Descaling, and refilling of water before using		Easy Maintenance, No water/descaling needed!
<b>Usage of Equipment</b>	Can only be used for baby bottles.		Can be used for baby bottles, toys, breast pumps, wallets, mobile phones, etc.
<b>Duration of function</b>	Takes 15 to 20 minutes to fill the steriliser with water and to dry the bottles after steaming.		Easy one-button activation, place items in UV Steriliser within 1-2 minutes.
<b>Capacity</b>	Stores 1-6 bottles		Stores up to 16 bottles

# UV MARKER

An ultraviolet (UV) marker is a pen whose marks are fluorescent but transparent; the marks can be seen only under an ultraviolet light.



The images shown are for illustration purposes only.



# LASER ENGRAVING

Laser engraved tags and labels for equipment

- \* Cannot be wiped off with cleaning solution
- \* Laser engraving does not fade like printing does
- \* Self-adhesive labels
- \* Laser cut to ANY size you require
- \* Many difference colours to choose from



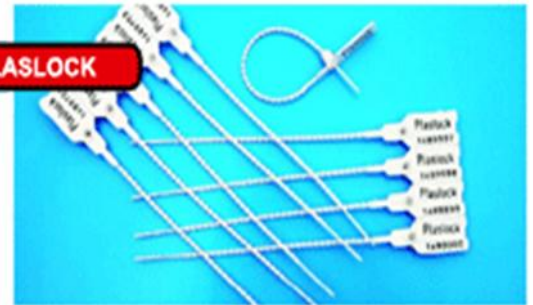
Labels and Signage for Equipment, furniture, lockers, department, Drs rooms etc.



# SECURITY / MEDICAL SEALS



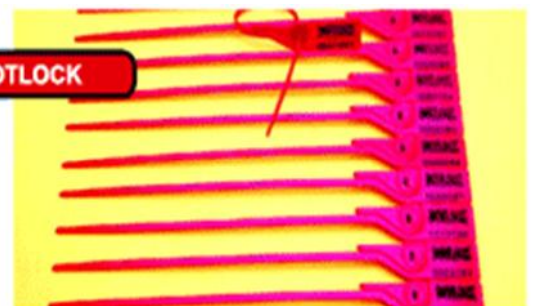
Pull tight seal with a label.  
Effective length 22cm.  
Width 7 x 3 mm thick



Either Nylon or polypropylene.  
Notched tail pull tight seal.  
Effective length 14 cm.  
Tail diameter 3.2 mm.



Fixed length polypropylene seal.  
Effective length 22 cm.  
Width 8mm x 1.4 mm thick.



Pull tight seal with label holder.  
Effective length 22 cm.  
Width 7 x 3 mm thick.



Various shapes and sizes available.  
Bags with locking chamber and  
window.



Trinity Medical Supplies and Services cc  
Address: 28 Wynne Road, Centurion,  
Tshwane Gauteng, 0157, ZA  
Tel: +27 623441987  
Email: [sales@trinitymedical.co.za](mailto:sales@trinitymedical.co.za)  
Reg No. 2005/038606/23  
Vat number: 4300219831  
Level 4 B-BBEE Provider  
SAHPRA License no: 0000740MD

---

#### National Sales and Training

Contact: Michele Hiscox

Cell: +27 62 344 1987

E-Mail: [michele@trinitymedical.co.za](mailto:michele@trinitymedical.co.za)

#### Office Sales Support

Contact: Dee Andrews

Cell: +27 72 199 0307

E-Mail: [sales@trinitymedical.co.za](mailto:sales@trinitymedical.co.za)

#### Wellness Equipment Sales and Training

Contact: Sevy Andrews

Cell: +27 72 364 3027

E-Mail: [sevy@trinitymedical.co.za](mailto:sevy@trinitymedical.co.za)

#### Office Admin

Contact: Estie Coetzer

E-Mail: [admin@trinitymedical.co.za](mailto:admin@trinitymedical.co.za)

---

**Thank you for over a decade of support ...  
We look forward to being of service to you  
for the next decade**

---